

Software Version Description (SVD)
for
C2PC ICSF Interface Layer (CIIL)
Version 2.3.0.0

September 23, 2004

Version 1.0

Prepared for:

Space and Naval Warfare Systems Center

PEO-IT & C4I

Prepared by:

Moebius Solutions, Inc.

5755 Oberlin Road
Suite 300
San Diego, CA 92121

1. SYSTEM OVERVIEW1

2. REFERENCED DOCUMENTS1

3. VERSION DESCRIPTION1

 3.1 INVENTORY OF MATERIALS RELEASED1

 3.2 POSSIBLE PROBLEMS AND KNOWN ERRORS.....2

 3.3 CHANGES AND CORRECTIONS SINCE 2.2.0.0.....2

4. NOTES.....4

1. SYSTEM OVERVIEW

CIIL is a middleware solution that exposes the ICSF 452X JM, JMV, TMS and TMSV API sets from a C2PC 6.0.2 injector. This solution enables NT COE segments developed against the ICSF 452X APIs to run in a non-COE, non-ICSF environment. When installed on C2PC, various ICSF and installed segment menus will be interleaved with the C2PC menus. A user account that does not run AFW can be configured in the NT COE environment to aid performance. This will prevent some of the ICSF processes from running.

2. REFERENCED DOCUMENTS

1. CIIL FAQ located on the CDROM.
2. CIIL 2.2.0.0 Test Report available from the COE-M Test Lab.

3. VERSION DESCRIPTION

3.1 Inventory of Materials Released

Magnetic media. CIIL Version 2.3.0.0 will be released on a CD-ROM intended for the Intel PC hardware environment. The installation of CIIL Version 2.3.0.0 is packaged as a standard Microsoft MSI installation as well as a NTCOE Segment. The CIIL Version 2.3.0.0 CD supports installation of CIIL Version 2.3.0.0 on the Windows 2000 operating systems and COE Kernel 4.2.0.9 or higher and ICSF 4520P7 or higher.

Installation CD Contents

MSI Windows Installation Files:

1. Autorun.inf – instructions for which program to automatically start after the CD has been inserted in the CDROM drive (assuming the computer is configured to autorun CDs).
2. Data1.cab – archive file containing the source files for installation.
3. C2PC ICSF Interface Layer.msi – Microsoft Windows installer configuration file.
4. Setup.exe – File that launches the Microsoft Windows Installer based installation.
5. CIIL InstallShield Installation Instructions.doc.
6. CIIL.doc – boiler plate text for user guide use.
7. CIIL FAQ.doc – useful information on CILL.

8. CIIL SVD – software version description document.

NTCOE Segment files:

1. CIIL#COTS#2.3.0.0#PC.001
2. DIIHeader
3. Distrib
4. TOC.01

3.2 Possible Problems and Known Errors

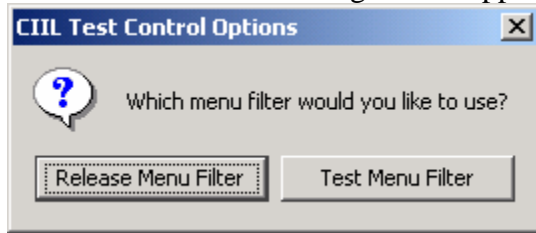
The following items are known issues with C2PC 6.0.0.0/ICSF and have been identified to the developers for resolution:

1. MGRS is unable to convert positions containing 90 deg N/S. This results in C2PC crashing when a track with this position enters the system and is selected by the user.
2. ICSF CME TDAs Quick CPA and Quick Intercept produce incorrect results.

3.3 Changes and Corrections since 2.2.0.0

1. Image interface in C2PCGraphics.dll can cause a deadlock situation and or a C2PC crash. The crashes are random and sometimes frequent. Patches were submitted to the C2PC team and are included in C2PC 6.0.2.
2. Polyline animation exposes a C2PCGraphics bug that will crash the system. JTT uses this animation in its overlays program. Patches were submitted to the C2PC team and are included in C2PC 6.0.2.
3. ICSF has a random crash when exercising the Track History TDA. This appears to be fixed with ICSF 4.5.2.0P7.
4. If the initial map is not called “System” CIIL will prompt you to rename it.
5. If TrackPlot or TMS is not connected to their perspective servers CIIL will prompt you with a warning dialog when you try to select tracks.
6. There is now a user interface to change the menu filter to the “Test Menu Filter” and to reset the menu to the “Release Menu Filter”. Open the About CIIL dialog. Press **Ctrl +**

Shift + Alt + T. This dialog should appear:



7. Addressed recommendations from the CIIL 2.2.0.0 test report
 - 7.1. For recommendation 1 see item 6.
 - 7.2. For recommendation 2 FOTC was replaced with CIIL.
 - 7.3. For recommendation 3 FOTC was replaced with CIIL.
 - 7.4. For recommendation 4 FOTC was replaced with CIIL.
 - 7.5. For recommendation 5 FOTC was replaced with CIIL.
 - 7.6. For recommendation 6 see item 6.
 - 7.7. For recommendation 7 see item 6.
 - 7.8. For recommendation 8 FOTC was replaced with CIIL.
 - 7.9. For recommendation 9 see item 4.
 - 7.10. For recommendation 10 see item 4.
 - 7.11. For recommendation 11 the NSI installer addresses the issue.
 - 7.12. For recommendation 12 a Help About CIIL and a Help CIIL Overview was added.
 - 7.13. For recommendation 13 the Jm API layer was updated to support JmBaseObject.*label* methods.
 - 7.14. For recommendation 14 the Jm API layer was modified to prevent C2PC from starting animation inappropriately.
 - 7.15. For recommendation 15 the Jm API layer was modified to fix a NullPointerException.
 - 7.16. For recommendation 16 a trouble report was submitted to C2PC.
 - 7.17. For recommendation 17 the default date format was fixed.
 - 7.18. For recommendation 18 ICSF 4.5.2.0P7 with CME 4.5.5.0P2 fixes this issue.

- 7.19. For recommendation 19 see item 7.13.
- 7.20. For recommendation 20 see item 4.
- 7.21. For recommendation 21 unresolved.
- 8. Java Modal dialogs are not model for all of C2PC and not just the Java portions in CIIL.
- 9. Runtime version of CIIL has most debugging turned off by default. This fixes problem where JVM just exits if network port is already in use for remote debugger.
- 10. Changed CIIL registry usage so that you can run CIIL as a non-Administrator user.
- 11. Fixed JmColor handling in the Jm API. Some properties were not getting correctly cloned.
- 12. Added a new fast Latitude, Longitude, Altitude to X,Y conversion scheme.
- 13. Fixed bug, when objects are not pick-able do not fire double click events.
- 14. Tracked down why FourWhiskey's grid bitmap looked so messed up. JmvBitmap uses the same padding as JmBitmap (16 bits, tried several unit tests to verify ICSF and CIIL render the same image). However, FourWhisky is coded to use an 8 bit pad. This bug never (rarely) shows up in ICSF because JmvMapWin.getPixmapWidth usually returns a number that is the width in pixels of the screen. This number is also usually divisible by 16. Need only to set ICSF's pan buffer to a different size to recreate.
- 15. Fixed a problem with getting the wrong NTDS symbol.
- 16. Fixed the delete filter name for the "Bookmarks" top-level menu. It actually has a name of StoreMap.

4. NOTES

- 1. You must rename the initial map that comes up with C2PC to "System.". This map MUST be open when the FOTC injector is started.
- 2. CIIL is unable produce certain key binds for ICSF segments directly. In order to enable this functionality, use the following alternative key strokes as indicated:
 - Control Left Click – hold down the c key and left click
 - Shift Left Click – hold down the s key and left click
 - Double Left Click – hold down the d key and left click
- 3. The CIIL injector activation is NOT complete until the "start" button that appears at the top of the CIIL injector pane is pressed.

4. You must start Trackplot and connect to the C2PC Gateway prior to starting the CIIL injector.
5. When using an ICSF segment that displays images on C2PC, the image is not auto-activated; you must go to the C2PC map manager and “activate” the image to cause it to be displayed.
6. You can run CIIL as a non-Administrator user, but you cannot change the menus to the “Test Menu Filter” or reset them to the “Release Menu Filter” unless you are running CIIL with an account with 'Administrator' privileges.