

# CIIL User's Guide Information

## Overview

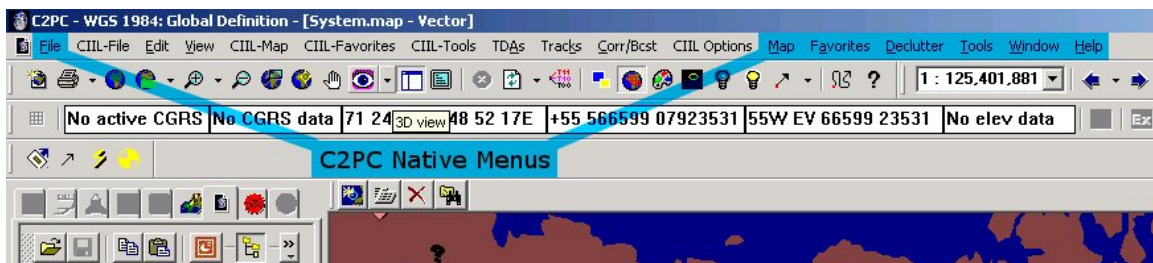
CIIL is a middleware solution that exposes the ICSF 452X JM, JMV, TMS and TMSV API sets from a C2PC 6.0 injector. This solution enables NT COE segments developed against the ICSF 452X APIs to run in a non-COE, non-ICSF environment. As a middle ware solution, CIIL provides no specific user interface. When installed on C2PC, various ICSF and installed segment menus will be interleaved with the C2PC menus. A user account that does not run AFW can be configured in the NT COE environment to aid performance. This will prevent some of the ICSF processes from running.

JMV APIs are implemented to service calls made against these APIs by using the C2PC cartographic engine, Atlas. IFLConvert is implemented to stay in harmony with the C2PC IFLConvert so total system unit display is consistent.

Track information is obtained by using the ICSF TMS services so all TMS related APIs are supported as they are in the ICSF system. Display of these ICSF tracks is suppressed to prevent duplicate track display (C2PC Trackplot tracks and ICSF Symplot tracks).

## Menus

CIIL exposes selected ICSF menus by filtering out the undesired menu items. Further, it allows the menus provided by installed segments to be exposed also. This is accomplished by reading the ICSF ChartWindow.properties and ChartWindowDB.properties files. CIIL then creates a CIIL filter file, IRMInjectorBridge.properties, which contains menu items to be filtered out and not shown. The ICSF menus will appear in the C2PC main menu. The native C2PC menus are high-lighted as shown below, for clarity. The ICSF menus are show as they appear.



## Mouse

ICSF generates different events to applications depending on the state of the keyboard modifiers. C2PC uses these same keyboard modifiers to control how objects on the map are selected. In a few rare cases you will need to simulate a mouse click that is coupled with a keyboard modifier being pressed.

The following unique key binding translations are used by CIIL:

<u>ICSF Click</u>	<u>CIIL Binding</u>
Control-left Click	hold down the “c” key and left click
Shift-left Click	hold down the “s” key and left click
Double-left Click	hold down the “d” key and left click

## ***Image Activation***

After activating an image for display in the Image Manager, some graphics features require the user to activate the image with the C2PC map data manager.

## ***Starting***

The CIIL injector recovers the ICSF environment using the same mechanics as AFWRun uses in the NTCOE environment. CIIL determines the installed location of IFL, JMV and AFW and sets the corresponding home variables in an environment space local to the Java Virtual Machine (JVM). When the CIIL injector first come up, a “START” button is displayed in the window pane. The user must click on this button to complete the injector startup. These mechanics for the injector startup assist in rapid initial application initialization.

## ***Track Databases***

To insure the CIIL and C2PC track databases are displayed consistently you should make sure the C2PC Client is connected to the C2PC Gateway Server. If you see these icons in the C2PC Status Bar:

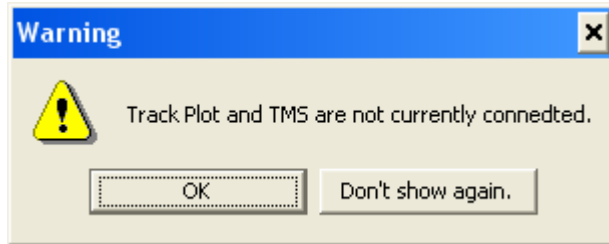


Then you should click on the Tools|TrackPlot menu and then click on the TrackPlot|Connect to Gateway menu. Once you see the green icons you are ready to proceed.



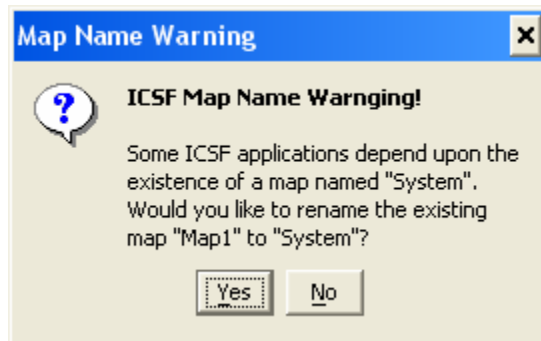
Failure to do this may result in inconsistent results from CIIL hosted ICSF components. To perform track selection operations, CIIL must be able to connect to both C2PC’s Track Plot application as well as to ICSF’s TMS server. If either of these two connections have not been established or have been shutdown in some way, CIIL will not be able to synchronize track selections made by the user. New functionality has been added to monitor the connection status to both TMS and Track Plot. If CIIL detects a problem with either connection when a user attempts to select tracks, it will display a message to the user indicating which connection is currently not responding. This dialog is informative only and will not try to correct the problem since that requires system configuration and operation outside the scope of CIIL. This dialog will display during every track selection operation.

The user can elect to stop the dialog from appearing by clicking on the “Don’t show again” button of the dialog, or toggling the "Enable TMS/Track Plot Status Dialog" menu option from the new “CIIL Options” menu in the main menu bar. The dialog is shown below.



### System Map

In previous releases of ICSF, certain ICSF applications relied upon the presence of a map name “System”. If this map did not exist or was not currently opened, certain ICSF applications would fail. To handle this scenario, functionality has been added to CIIL to check whether or not a map named “System” exists during system startup. If CIIL detects that a map named “System” is not opened, a dialog window will appear and prompt the user to change the current map’s name to “System.” If the user elects to change the map’s name, CIIL will perform the name change and continue the startup process. The dialog is shown below.



You can determine which version of CIIL is running you can use the About CIIL menu item.

